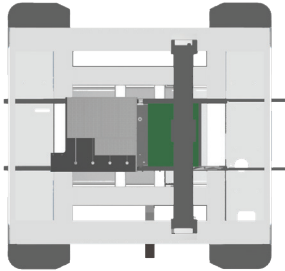
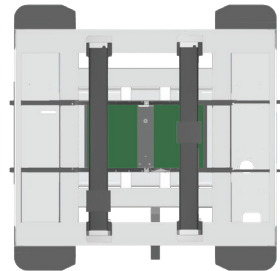




With its high placement speeds, huge capacity, impressive flexibility and extensive range of options, the **atom** platform is all about maximising productivity.



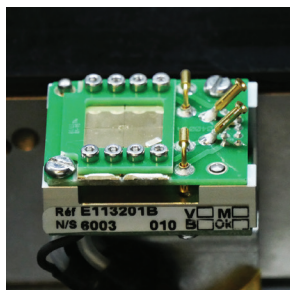
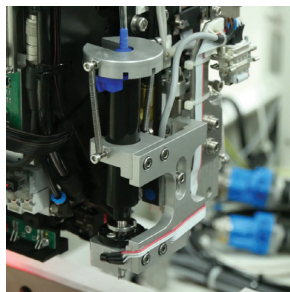
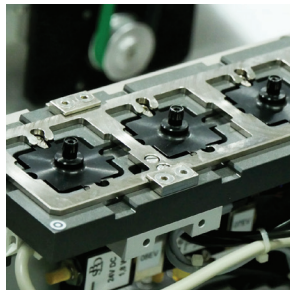
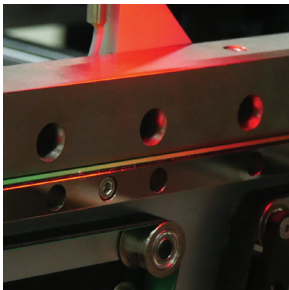
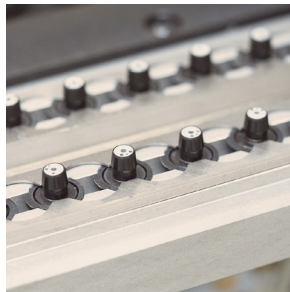
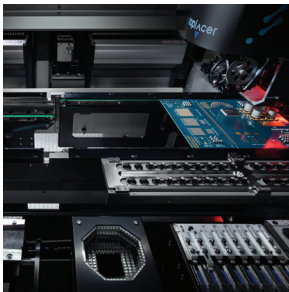
iA1



iA2

SPECIFICATIONS

Head Type	Tornado			Pulsar	
Technology	Turret			Pipette	
Nozzle position	8 or 12			8	
Placement speed	Max	8 nozzles: 14 000 Cph (takt time) 12 nozzles: 15 390 Cph (takt time)		26 000 Cph (takt time)	
	IPC	8 nozzles: 11 580 Cph 12 nozzles: 12 550 Cph		20 000 Cph	
Placement accuracy	Chips	46 µm @3σ Cpk ≥ 1.0		50 µm @3σ Cpk ≥ 1.0	
	QFP	22 µm @3σ Cpk ≥ 1.0		22 µm @3σ Cpk ≥ 1.0	
Component range	Size	Standard 0.4 x 0.2 mm (01005) - 50 x 50 mm	Fixed camera Up to 99 x 99 mm	Under condition More on demand	Standard 0.4 x 0.2 mm (01005) - 13 x 13 mm
	Height	Up to 21 mm	8 nozzles: up to 34 mm (1 component mode) 12 nozzles: up to 31 mm (1 component mode)		Up to 7 mm
	Type	µBGA, LGA, CSP, Connectors, Flip chip, Through hole and odd-form devices			
	Min lead pitch	0.3 mm (QFP) / 0.4 mm (µBGA)			
	Min lead/ball size	0.15 mm (QFP) / 0.2 mm (µBGA) with optional fixed camera for turret 0.15 mm (QFP) / 0.2 mm (µBGA) 0.07 mm (QFP) / 0.1 mm (µBGA) with optional fixed camera for turret			
Machine Type	ii-A1			ii-A2	
Configuration	1 Tornado Head 1x Independent X/Y linear gantry			2x Pulsar Heads 2x Independent X/Y linear gantries	
'Smart' Nozzle tool banks	Standard	Options		Standard	Options
	1x 60 positions in front	1x additional special tool bank (for odd form) 1x 40 positions in front		2x 40 positions in front	Up to 2x additional 40 positions at rear
Component Analysis	1x 'On-the-fly' high resolution digital camera		1x fixed camera	2x 'fly over' high resolution digital camera in front / Up to 2x 'fly over' high resolution digital camera at rear	
Feeders	Capacity 164 x 8mm tape feeder position + matrix trays for equivalent of 4 or 5 Jedic			164 x 8mm tape feeder position	
Board Handling	Range	Full range of Europlacer intelligent feeder for 4mm to 104mm tapes, plastic sticks, wide range of matrix trays feeders, Sequencer, short tape feeders, bulk feeders, Fluxer, Label feeder, solder ball feeder			
	Min PCB Size	50 mm x 45 mm (l x w)			
	Max Length	1080mm		1088mm	
	Max Width	510 mm as standard / 715 mm (without feeder at rear)		460 mm as standard / 510 mm (without camera+nozzles at rear) / 715 mm (without feeder at rear)	
	Thickness	0.5 mm to 10.0 mm			
	Max Weight	3 Kg / (10 Kg as an option)			
	Board clearance	Under clearance: 25mm Edge clearance: 3mm			
	Board location	Full edge clamping with fiducial correction			
Conveyor type	Patented intelligent tracking system: without mechanical stopper, fully flexible, real-time status, contributes to throughput optimization				
Transport criteria	Left to right, fixed front rail, height-adjustable 890mm to 975mm, SMD interface				

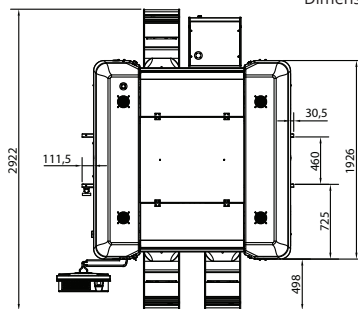
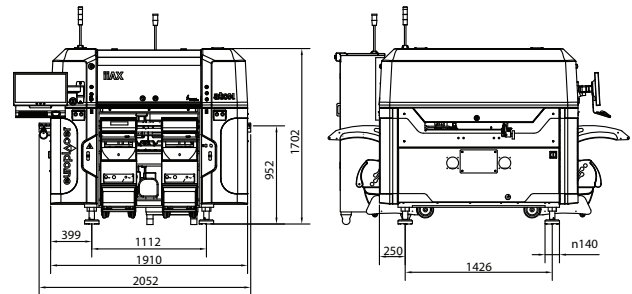


**GENERAL**

<b>Electrical</b>	400V/210V three phase 50Hz/60Hz, 8kVA
<b>Air</b>	7 bar, 30l/min
<b>Noise</b>	<70dB (A)
<b>Working temperature</b>	10°C to 30°C, ideally 20°C +/- 5°C
<b>Humidity</b>	20% to 80% RH non-condensing
<b>Weight ii-A1 / ii-A2</b>	1800 kg / 1900 kg (without feeders and packaging)
<b>Colour</b>	RAL9002, RAL5024, RAL7043

**OPTIONS**

- Fixed upward looking camera for larger and very fine pitch components on Turret head (ii-A1)
  - 2x 'fly over' high resolution digital camera at rear (ii-A2)
  - 2x additional 40 positions at rear (ii-A2)
  - Electrical component testing
  - Glue dispenser
  - Glue/paste Dispenser with Auger valve
  - Motorization of conveyor width adjustment
  - HeavyPCB kit for conveyor (10 kgs)
  - Wide pcb kit 715mm (with no feeder at the rear)
  - Rear operating station
  - Keyboard, mouse, support
- ii-A1: • Internal tray holder zone 427mm x 490mm – 4 Jeduc tray equivalent, max. PCB length 620mm  
 • Internal tray holder zone 587mm x 490mm – 5 Jeduc tray equivalent, max. PCB length 460mm



As part of our policy of continuous development, specifications are subject to change without prior notice.



**Europlacer Americas**  
4640 E. Elwood St.  
Suite 14  
Phoenix, AZ 85040  
**USA**  
contact@eurolplacer.com  
+1 480 672 1100



**Europlacer China**  
Floor 1, Building 1  
No.80 Huashen Road,  
Shanghai Waigaoqiao  
Free Trade Zone,  
**P.R.China** 200131  
contact-china@eurolplacer.com  
+86 (021) 5868 3500



**Europlacer France**  
Route de Cholet  
85620 Rocheservière  
**France**  
contact@eurolplacer.fr  
+33 (0)2 5131 0303



**Europlacer Germany**  
Im Böning 24  
63695 Glauburg  
**Germany**  
contact@eurolplacer.de  
+49 (0)60 419 692 300



**Europlacer Italy**  
Via Flavia, 35  
34148 Trieste  
**Italy**  
contact@eurolplacer.it  
+39 (0)40 832 0563



**Europlacer Spain**  
AV Atenas 127  
19170 El Casar  
Guadalajara  
**Spain**  
contact@eurolplacer.es  
+34 (0)673 171 249



**Europlacer UK**  
30 Factory Road  
Upton Industrial Estate  
Poole, Dorset BH16 5SL  
**United Kingdom**  
contact@eurolplacer.co.uk  
+44 (0)1202 266500



**Europlacer Asia Pacific**  
Taiwan, Japan, Korea, Malaysia, Thailand...  
No. 10, Lane 3, Anzhong St.  
MIT Industrial Park, Luzhu District,  
Taoyuan City, **Taiwan** 338  
contact-apac@eurolplacer.com  
+886 (0)3 322 4499