

X-SCOPE

2000 X-RAY INSPECTION SYSTEM

SCIENSCOPE
INTERNATIONAL



X-Scope 2000 X-Ray Inspection System

The X-SCOPE 2000 X-Ray Inspection System is a full featured high-performance x-ray inspection instrument with an unbeatable price to performance ratio which includes all of the advanced features.

Applications

- Molded plastic
- Automotive assemblies
- Medical devices
- Pharmaceuticals
- Ceramics
- Agriculture
- Multilayer PCBs
- BGA, QFN, wire bond, etc.
- Semiconductor
- Over molded electrical connectors
- Encapsulated components
- Aluminum die casting

FEATURING

- Fully integrated, 90kV high power closed micro-focus x-ray tube
- Spot size down to 5 μ
- 4"x3" high resolution CMOS digital flat panel image detector
- 50° detector tilt for oblique angle viewing
- Automatic program inspection with fiducial & barcode
- 21.75" x 19.5" Inspection area
- Color mapping camera with zoom window provides easy location and identification of faults
- Z axis movement of the x-ray tube and detector
- Computer controlled kV and mA settings
- Computer controlled variable speed X-Y stage
- Simple point and click, intuitive GUI provides access to create advanced inspection routines

All software tools are standard including (but not limited to)

- BGA Void detection and automatic calculations
- Easy macro recording for intuitive step and repeat programming
- Various measuring tools for radius, area, perimeter, etc.
- Industrial PC with Windows 10, 24" LCD flat panel display



WWW.SCIENSCOPE.COM

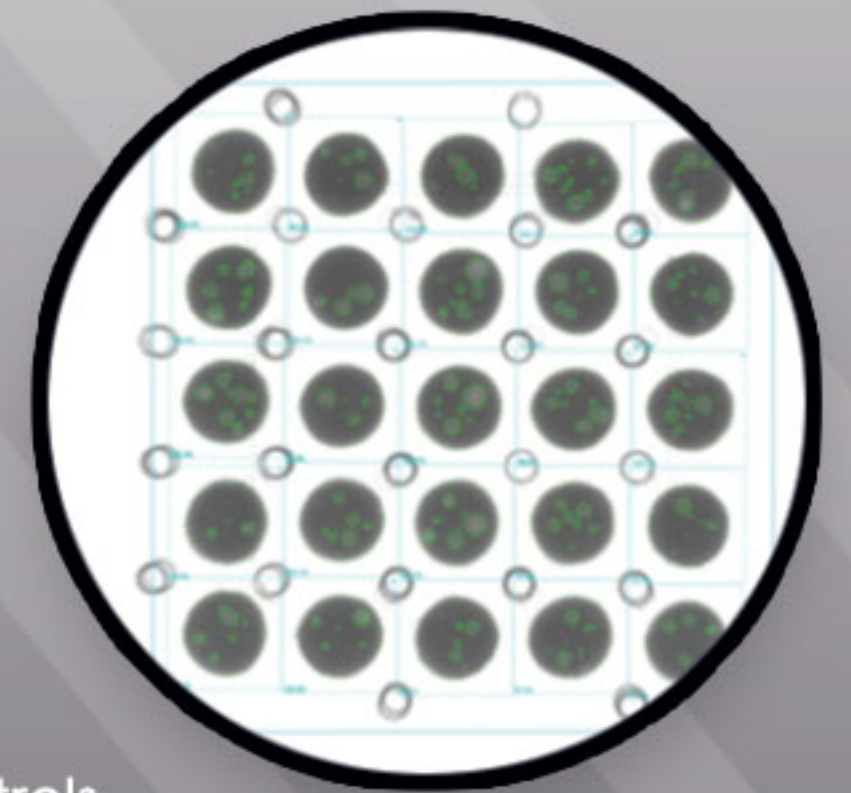
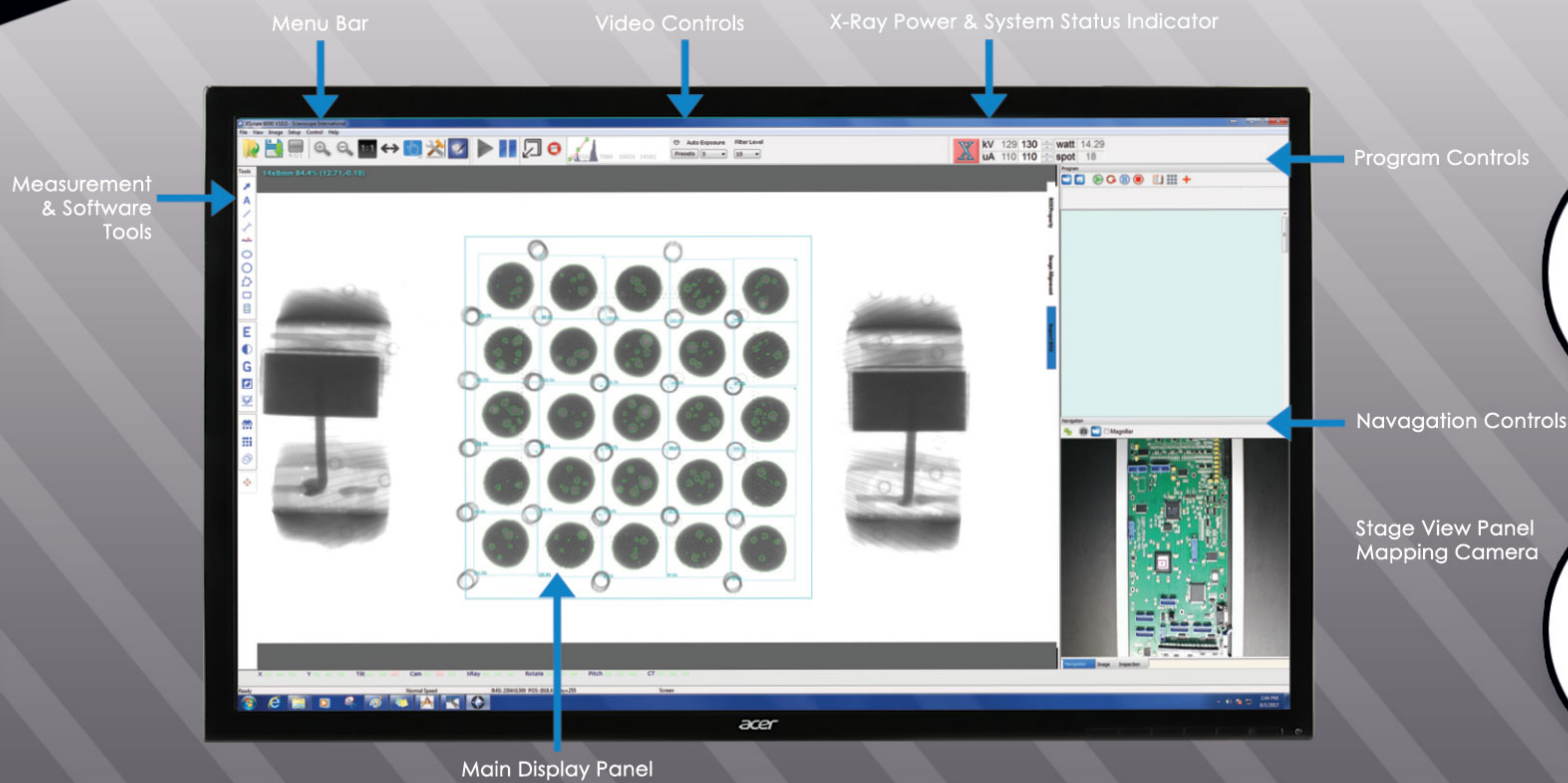
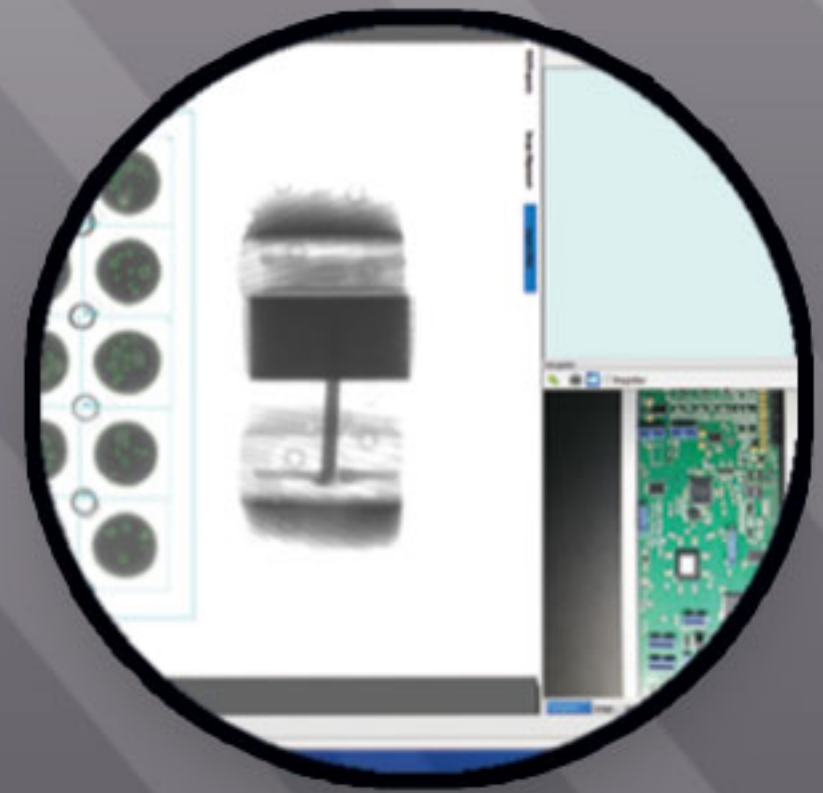


1(800)216-1800
info@scienscope.com



5751 Schaefer Ave
Chino, CA 91710, USA

PRODUCT SPECIFICATIONS



MACHINE SPECIFICATIONS

X-Ray Tube

- X-Ray Source: Micro-focus, integrated (closed)
- Operating voltage: 90kV
- Current: 0.160mA
- Minimum Focal Spot Size: 5 μ

General Machine Specs

- Dimensions: 55.5" x 53.5" x 66" (81" including light tower)
1358mm x 1358mm x 1677mm (2057mm including light tower)
- Weight: 1100kg /2425 lbs. (steel lead welded construction)
- Power: 100-240 VAC 47/63 Hz (auto switching)
- Industrial PC: Microsoft Windows 10 (64-bit)

Work Area

- Sample Table Size: 552mm x 496mm / 21.75" x 19.5"
- Inspection Area: 552mm x 496mm / 21.75" x 19.5"
- Oblique Angle View: $\pm 50^\circ$

Digital Flat Panel Detector

- Grayscale: 14 bit (16,384 shades of grayscale)
- Speed: 40FPS
- Resolution: 99 μ m
- Detector Size: 4" x 3" high resolution

THIS SYSTEM INCLUDES A 1 YEAR WARRANTY ON PARTS AND LABOR

Compliance

THE SCIENSCOPE X-SCOPE X-RAY INSPECTION SYSTEMS MEET THE FDA-CDRH REGULATION CFR 21 1020.40 SUBCHAPTER J FOR CABINET X-RAY SYSTEMS. THE FDA-CDRH STANDARD FOR CABINET X-RAY SYSTEMS STATES THAT RADIATION EMISSIONS WILL NOT EXCEED 50 MICRO R/HR 5 CM FROM ANY EXTERNAL SURFACE. THE X-SCOPE X-RAY INSPECTION SYSTEMS TYPICALLY HAVE A RADIATION EMISSION READING OF LESS THAN 20 MICRO R/HR 5 CM FROM ANY EXTERNAL SURFACE. ALL SCIENSCOPE X-SCOPE X-RAY SYSTEMS HAVE A CE APPROVAL. SCIENSCOPE X-SCOPE X-RAY SYSTEMS ARE CLASSIFIED AS "CABINET X-RAY SYSTEMS" AND REQUIRE NO EXTERNAL RADIATION SHIELDING. WELDED STEEL / LEAD-STEEL CONSTRUCTION, NO VISIBLE SHIELDING.

FDA ACCESSION NUMBER: 0710198

CE REFERENCE NUMBER: CN.CE.0402-05.09

